

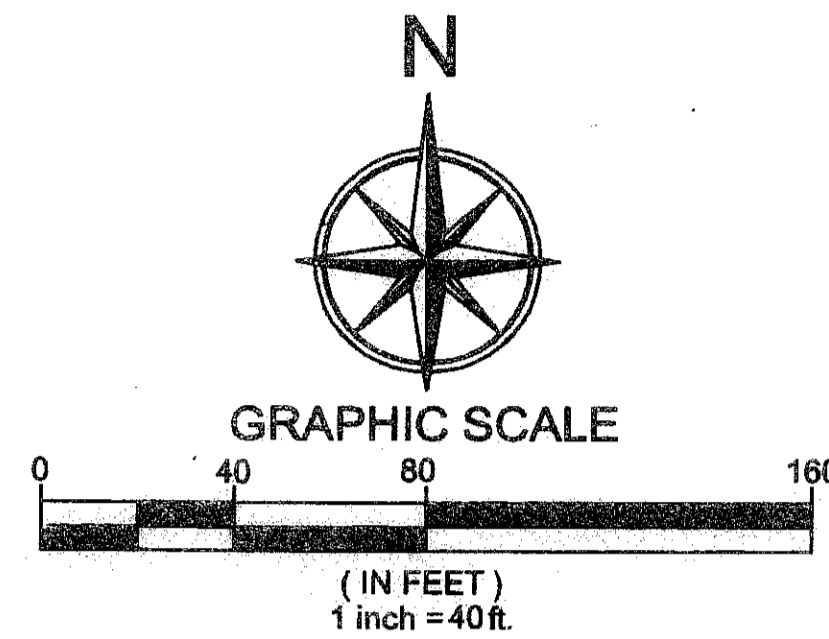
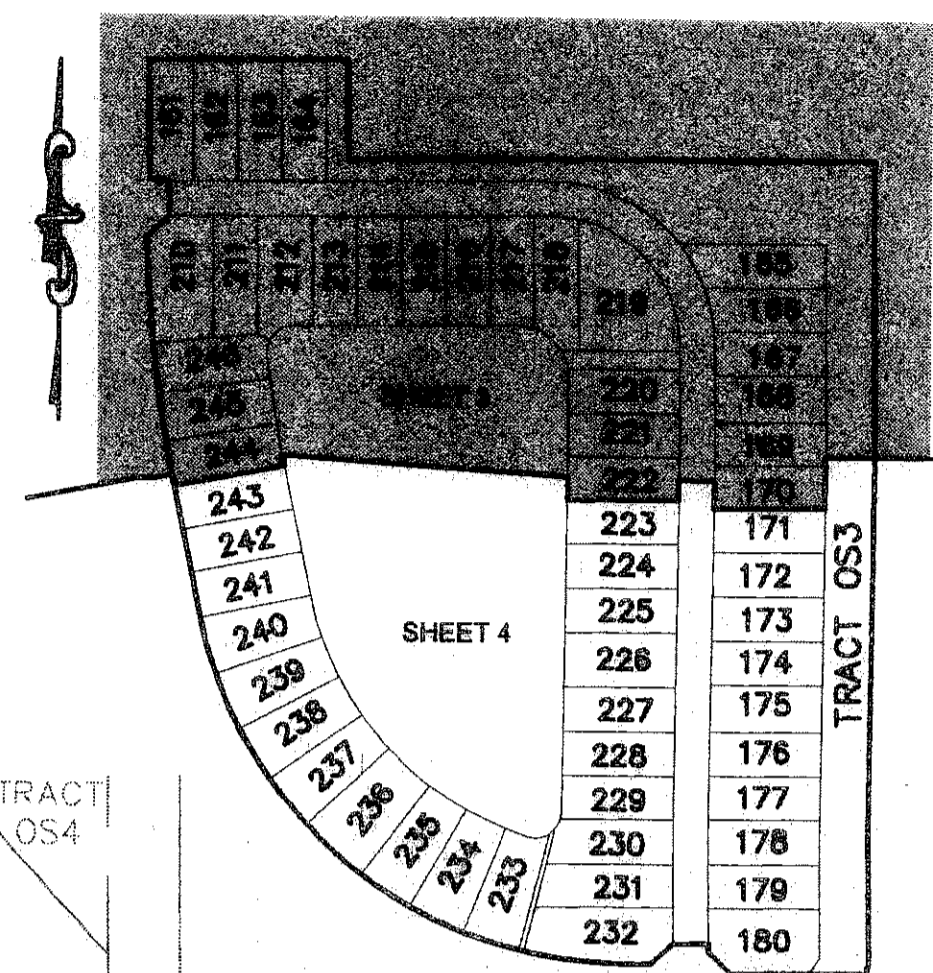
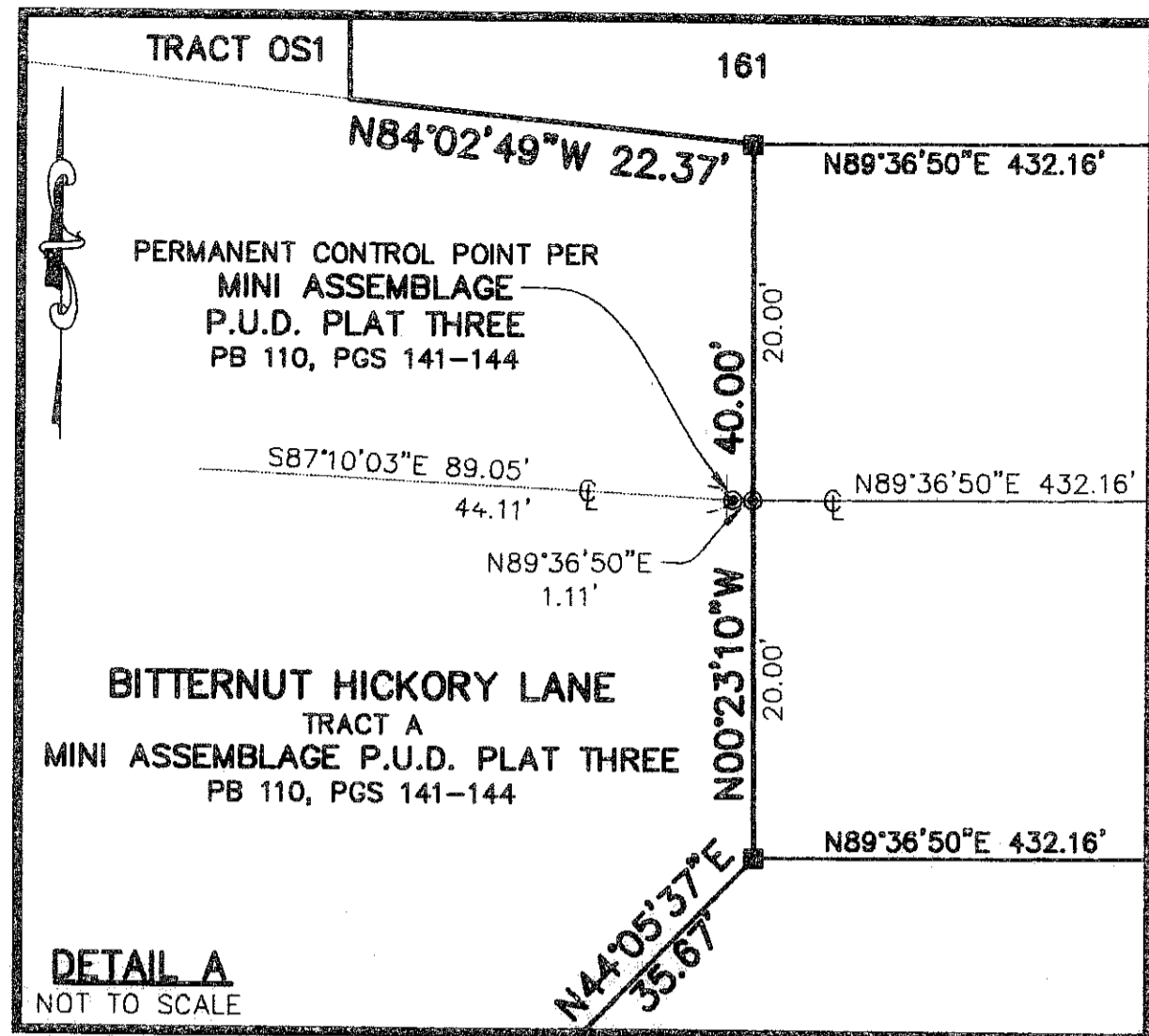
MINI ASSEMBLAGE P.U.D. PLAT FOUR

79

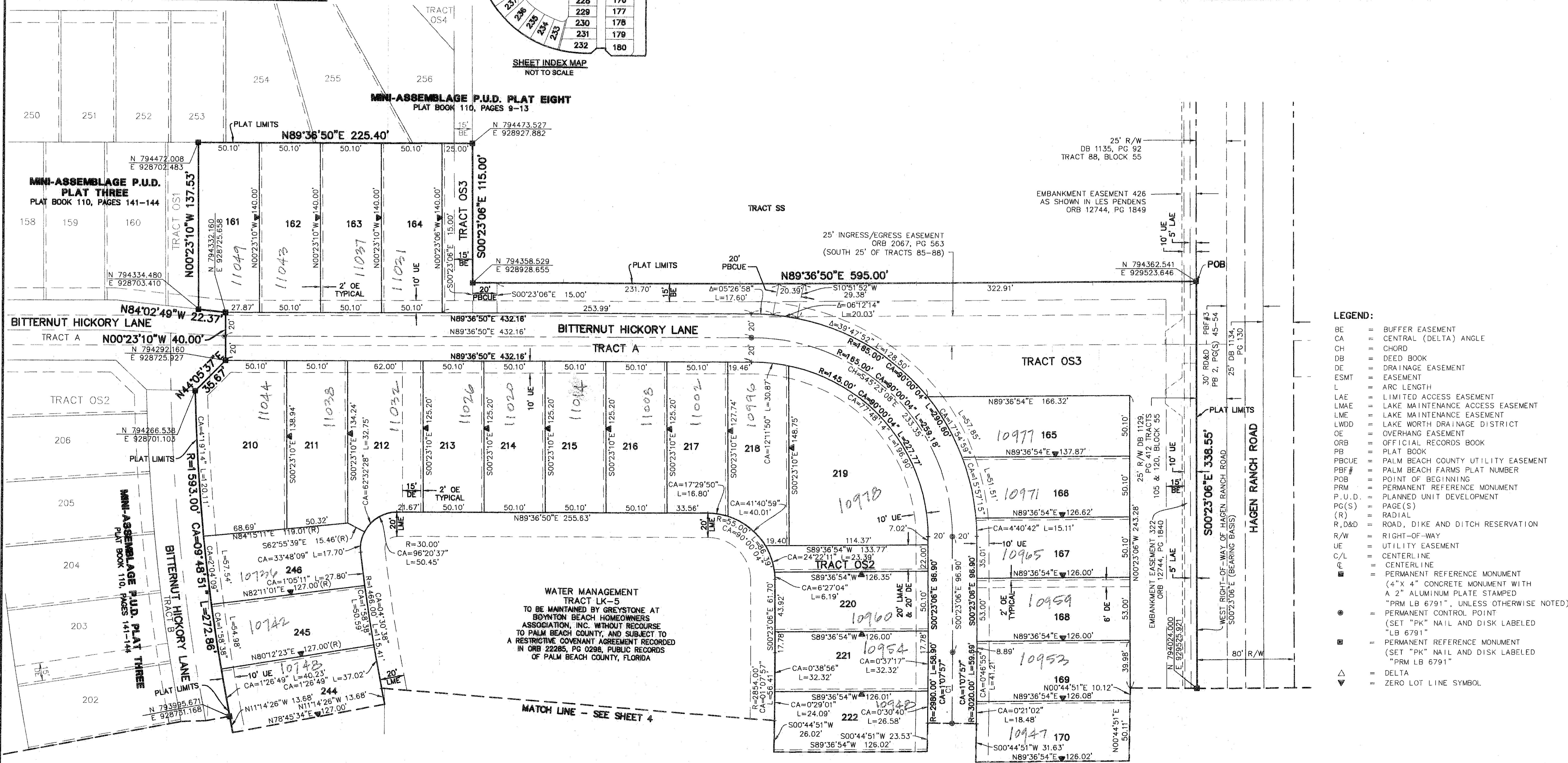
ALSO KNOWN AS GREYSTONE P.U.D.
 BEING A REPLAT OF ALL OF TRACT 106 AND A PORTION OF TRACTS 86, 87, 88, 105, 107, 118, 119
 AND 120, BLOCK 55, PALM BEACH FARMS COMPANY PLAT NO. 3, RECORDED IN PLAT BOOK 2,
 PAGES 45 THROUGH 54, PUBLIC RECORDS OF PALM BEACH COUNTY FLORIDA, BEING IN
 SECTION 28, TOWNSHIP 45 SOUTH, RANGE 42 E AST PALM BEACH COUNTY, STATE OF FLORIDA
 OCTOBER 2007 SHEET 3 OF 4

This Instrument Prepared By:
RONNIE L. FURNISS, P.S.M.
 Certificate of Authorization No. LB 6761
 OCTOBER 2007

Calvin, Giordano & Associates, Inc.
 Engineers Surveyors Planners
 580 Village Boulevard, Suite 340
 West Palm Beach, Florida 33409
 Phone: 561.864.6161 Fax 561.864.6560



CURVE TABLE					
CURVE	RADIUS	DELTA ANGLE	ARC LENGTH	CHORD BEARING	CHORD LENGTH
C1	3000.00'	1°07'57"	59.29'	N00°10'52"E	59.29'



- LEGEND:**
- BE = BUFFER EASEMENT
 - CA = CENTRAL (DELTA) ANGLE
 - CH = CHORD
 - DB = DEED BOOK
 - DE = DRAINAGE EASEMENT
 - ESMT = EASEMENT
 - L = ARC LENGTH
 - LAE = LIMITED ACCESS EASEMENT
 - LMAE = LAKE MAINTENANCE ACCESS EASEMENT
 - LME = LAKE MAINTENANCE EASEMENT
 - LWDD = LAKE WORTH DRAINAGE DISTRICT
 - OE = OVERHANG EASEMENT
 - ORB = OFFICIAL RECORDS BOOK
 - PB = PLAT BOOK
 - PBCUE = PALM BEACH COUNTY UTILITY EASEMENT
 - PBF# = PALM BEACH FARMS PLAT NUMBER
 - POB = POINT OF BEGINNING
 - PRM = PERMANENT REFERENCE MONUMENT
 - P.U.D. = PLANNED UNIT DEVELOPMENT
 - PG(S) = PAGE(S)
 - (R) = RADIAL
 - R,D&D = ROAD, DIKE AND DITCH RESERVATION
 - R/W = RIGHT-OF-WAY
 - UE = UTILITY EASEMENT
 - C/L = CENTERLINE
 - = PERMANENT REFERENCE MONUMENT (4" X 4" CONCRETE MONUMENT WITH A 2" ALUMINUM PLATE STAMPED "PRM LB 6791", UNLESS OTHERWISE NOTED)
 - = PERMANENT CONTROL POINT (SET "PK" NAIL AND DISK LABELED "LB 6791")
 - = PERMANENT REFERENCE MONUMENT (SET "PK" NAIL AND DISK LABELED "PRM LB 6791")
 - △ = DELTA
 - ▼ = ZERO LOT LINE SYMBOL

Z:\2008\083044 Mini Assemblage Boundary and Plat\SURVEY\PLATV-083044-08-PLAT4.dwg 1/28/2009 11:07:02 AM EST

REVISED: 05-27-08